



## CT-800 *VoIP Gateway*

### Features

- ☐ Supports Voice over IP (VoIP)
- ☐ Uses an standard telephone to Make Internet Calls free of charge
- ☐ Configurable through your Networked PC's by Comtrend's PC Tool
- ☐ Supports PPPoE, DHCP and Fixed IP modes
- ☐ Configuration backup and restoration
- ☐ Software upgrade via TFTP client or FTP server
- ☐ Supports Caller ID
- ☐ Supports VAD/Silence suppression
- ☐ Support Echo Cancellation
- ☐ Supports NAT passthrough (STUN)



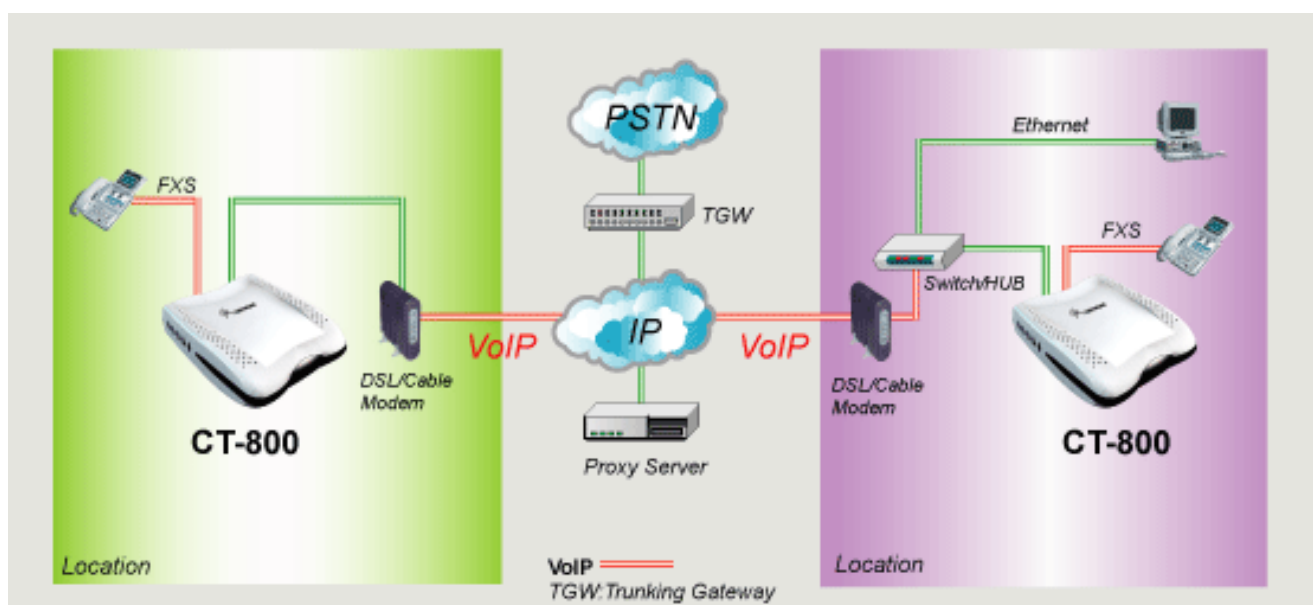
**CT-800**

### Description

Comtrend's CT-800 is a powerful VoIP Gateway, providing predictable, real-time, toll-quality voice over the Internet. The CT-800 is designed for residential and business users. It connects to an external Cable/DSL modem or internal NAT environment to access the broadband service.

A standard telephone connects to the RJ-11 port (telephone jack) on the back of the CT-800, allowing calls to be routed to anywhere in the world – significantly reducing or eliminating long distance charges. Your PCs connected to the CT-800 via a Switch/Hub don't even have to be turned on to make calls. The CT-800 supports NAT passthrough, which provides mobility of using the VoIP service. One of the world's smallest and technically advanced VoIP devices, the CT-800 is portable and reduces your space requirements. This makes the CT-800 the most valuable solution for your application.

### Applications Diagram



## Specifications

### WAN Interface

Ethernet x 1	IEEE 802.3 10/100 Base-T, Auto-crossing
--------------	---

### Analog Interface

FXS x 1
---------

### Management

Telnet, PC-Tool management, Configuration backup and restoration
--

Software upgrade via TFTP client or FTP server
--

### Security Functions

Authentication protocols	PAP, CHAP
--------------------------	-----------

### Voice Functions

SIP	RFC 3261	Caller ID Restriction	Yes
CODEC	G.711, G.729ab	Call Transfer	Yes
RTP(RFC1889)	Yes	Direct IP Peer-to-Peer Call	Yes
SDP(RFC2327)	Yes	Call Waiting	Yes
AEC(Acoustic Echo cancellation)	G.168	Call Hold/Resume	Yes
VAD/Silence suppression	Yes	Call Forward	Yes
DTMF detection/generation	Yes	CFU (Call Forward Unconditional)	Yes
CNG(Comfort Noise Generation)	Yes	Phone Book	Yes
Out-band DTMF(RFC2833)	Yes	STUN (RFC3489)	Yes
Jitter Buffer	Yes	Call Switch	Yes
Outbound Proxy (SIP)	Yes	Ring Back Tone	Yes
Caller ID Presentation	Yes	Busy Tone/ Dial Tone	Yes

### LED

Power, WAN, PHONE (CT-800)
----------------------------

### Power Supply

External power adapter (input)	100 ~ 240 Vac 50~60Hz
--------------------------------	-----------------------

External power adapter (output)	12Vdc/1.5A
---------------------------------	------------

### Environmental Conditions

Operating temperature	0 ~ 50 degrees Celsius
-----------------------	------------------------

Relative humidity	5 ~ 90% (non-condensing)
-------------------	--------------------------

### Dimensions

96 mm (W) x 30 mm(H) x 115 mm (D)
-----------------------------------

### Certifications

CE, FCC
---------



**COMTREND CORPORATION**

3F-1, 10 Lane 609, Chung Hsin Rd., Sec.5, San Chung, Taipei Hsien, Taiwan 241  
 Tel: 886-2-29998261 Fax: 886-2-29998497 E-mail: sales@comtrend.com  
<http://www.comtrend.com>

